

DAVIS INDUSTRIAL PARK

24,500 Sq. Ft.
Warehouse/Industrial
Space For Lease

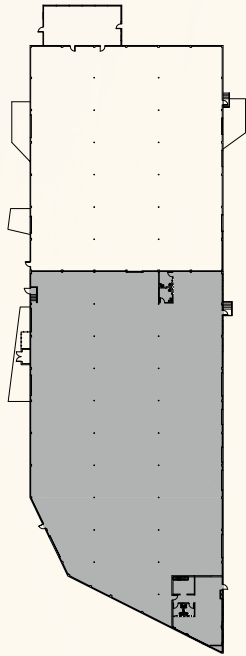


3247 NW Yeon Ave, Portland, OR 97210

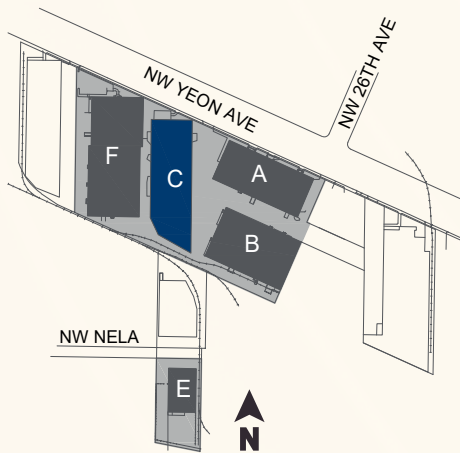
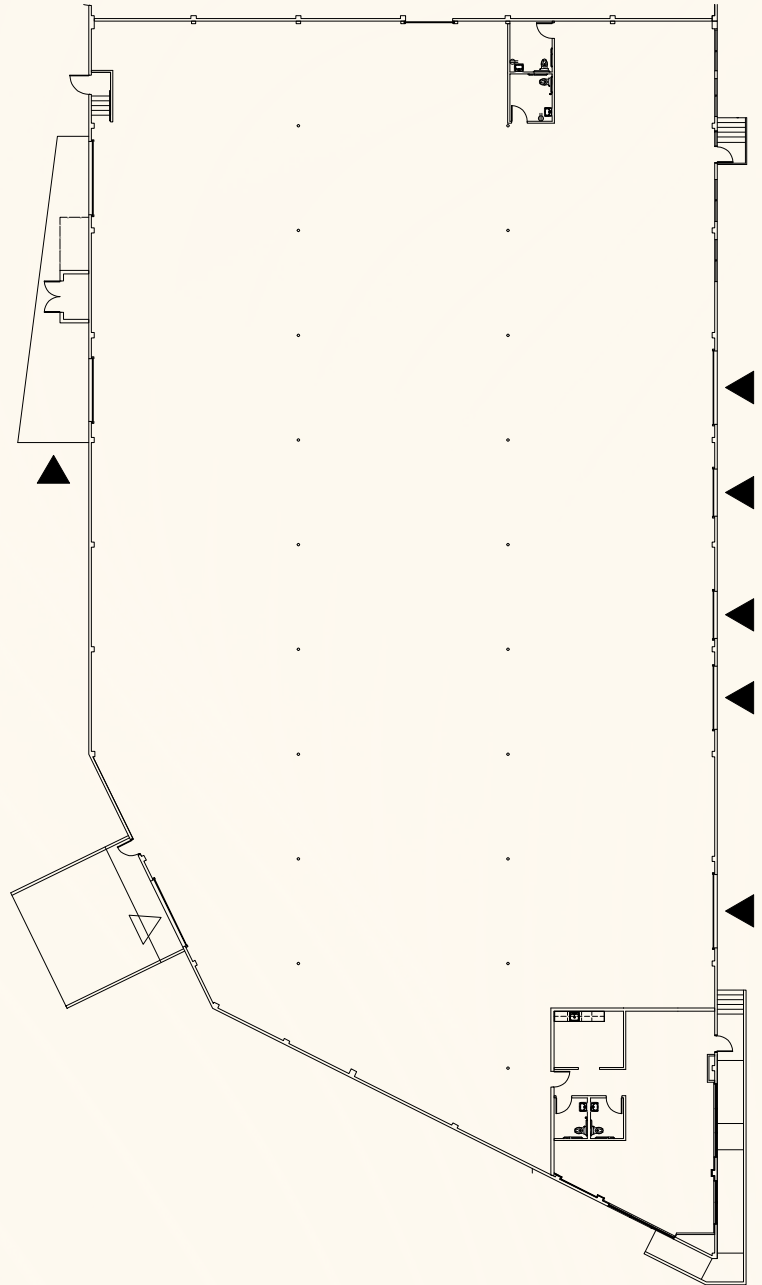
PACTRUST

Space Plan | 16' Clear Height

- ▲ Dock Access
- △ Grade Access



Building Plan



David Industrial Park
Warehouse/Industrial Space For Lease



Key Features



24,500 sq. ft shell



1,264 sq. ft. office



6 dock doors
1 grade door

LED lighting

Convenient access to I-405 and I-5

Desirable Guilds Lake location

Lease Rate:

\$0.80/sq. ft. shell

\$1.10/sq. ft. office

NNN Lease



Leasing Contacts

Jake Bigby

jakeb@pactrust.com

Caitlin Knecht

caitlink@pactrust.com

503.624.6300

www.pactrust.com

Owned & Managed by

PacTrust

Davis Industrial Park
Warehouse/Industrial Space For Lease

3247 NW Yeon Ave
Portland, OR 97210

